

000563

2013-13

# 2012

( )

			2012	12	31
	10	0.35	10		1
10	10				
	2012				

			000563
	SHAANXI INTERNATIONAL TRUST CO.,LTD.		
	SITI		
	50		C
	710075		
	50		C
	710075		
	<a href="http://www.siti.com.cn">http://www.siti.com.cn</a>		
	sgtdm@siti.com.cn		

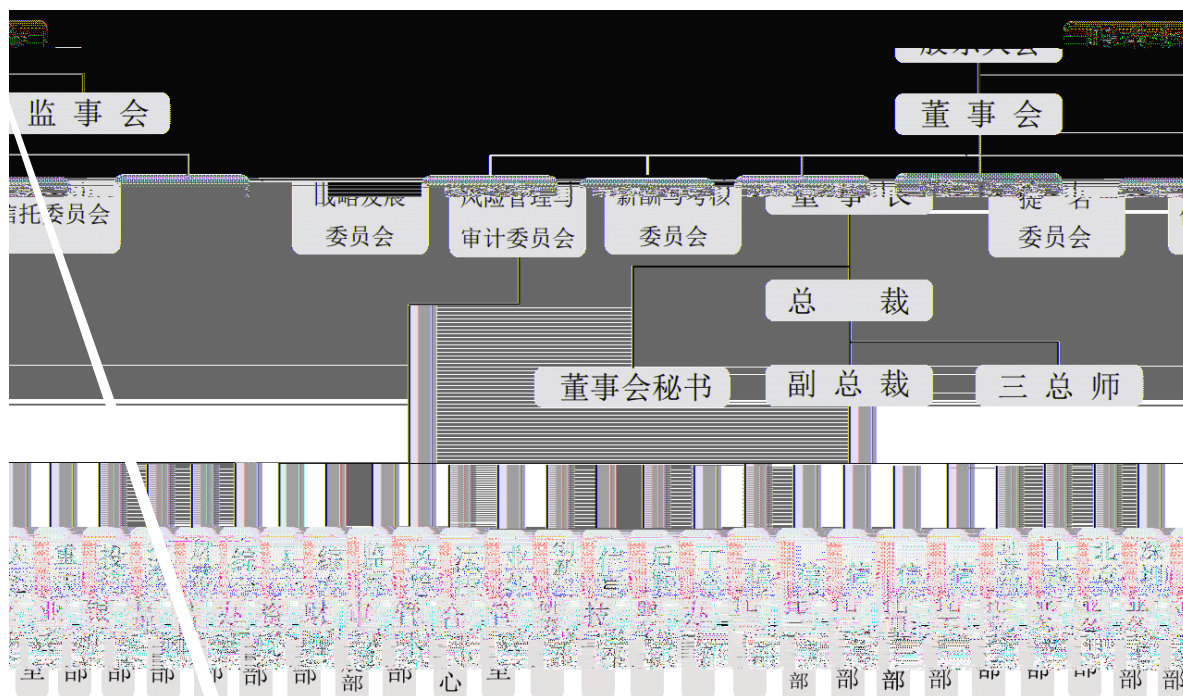
	50	C	50 C
	029 81870262/81870266/88851988		029 81870262/81870266/88851988
	029 88851989		029 88851989
	sgtdm@siti.com.cn		sgtdm@siti.com.cn

	<a href="http://www.cninfo.com.cn">http://www.cninfo.com.cn</a>

	25 3

√ □

	8		2012 4 24	2013 12 31



□ √

	2012	2011	(%)	2010
	576,308,789.42	304,422,023.04	89.31%	220,169,096.67

2012年12月31日 260,629,986.53 2011年12月31日 154,354,276.23 2010年12月31日 81,517,003.66

	3,560,886,609.43	1,212,088,634.92	193.78%	1,204,033,432.99
	3,262,825,853.10	849,560,011.71	284.06%	742,851,757.06

								(%)
	50,403.61	618.27	1.71	5.84	1,696.38	52,725.81	1,703.93	3.23
	183,140.60	1,045.74	43.94	1.32	1,699.99	185,931.59	1,745.25	0.94

						236,392.31	≥2	
						31,874.64		
						59,053.77		
						0.00		
						90,928.41		
/						259.98%	≥100%	
/						72.45%	≥40%	

## 1.

2012 12 31

:			:		
	4,107,647,070.35	2,306,608,756.81		-	-
	-	-		-	-
	20,945,127,578.78	8,305,608,672.49		-	-
	-	-		-	-
	738,690,576.38	1,916,661,905.00		-	-
	-	-		-	-
	-	-		963,204.12	390,740.40
	22,860,000.00	-		89,025,435.46	3,990,153.20

O

37,768,090,000.00	7,600,504,926.67			
7,047,970,000.00	4,577,880,000.00		89,988,639.58	4,380,893.60
-	-	:		
-				



	2	84,950.00	0.13%	5.38%
--	---	-----------	-------	-------

3

	3	31,944.25	0.13%	3.19%
	0	0	0	0
	0	0	0	0
	0	0	0	0

	48	702,664.00
	101	6,204,760.30
	0	0
	<b>149</b>	<b>6,907,424.30</b>
	147	6,747,424.30
	2	160,000.00

	100,000.00	200,000.00	200,000.00	100,000.00
	100,000.00	200,000.00	200,000.00	100,000.00

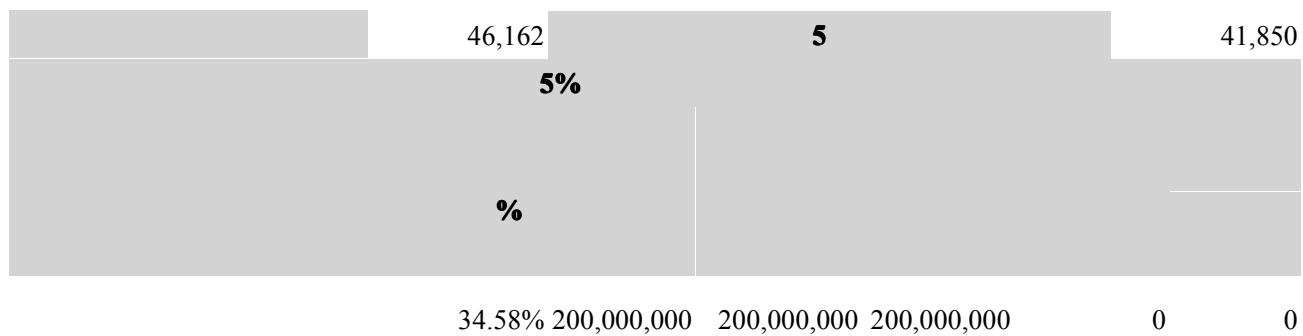
	)	( )
28,662.00	-3,173.00	25,489.00

TOT)

( )	( )	( )
195,160.47	-34,313.25	160,847.22

2006 2 15 38 1

	%
	0.55



	25				36
	2015	4	25		
	1				
		2		10	
		10			
<b>10</b>					
				158,935,937	158,935,937
				7,141,020	7,141,020
				5,400,000	5,400,000
				2,228,585	2,228,585
				2,099,874	2,099,874
				1,772,249	1,772,249
				1,213,460	1,213,460
				1,140,000	1,140,000
				1,080,000	1,080,000
				1,080,000	1,080,000
<b>10</b>		<b>10</b>		10	
	<b>10</b>			10	

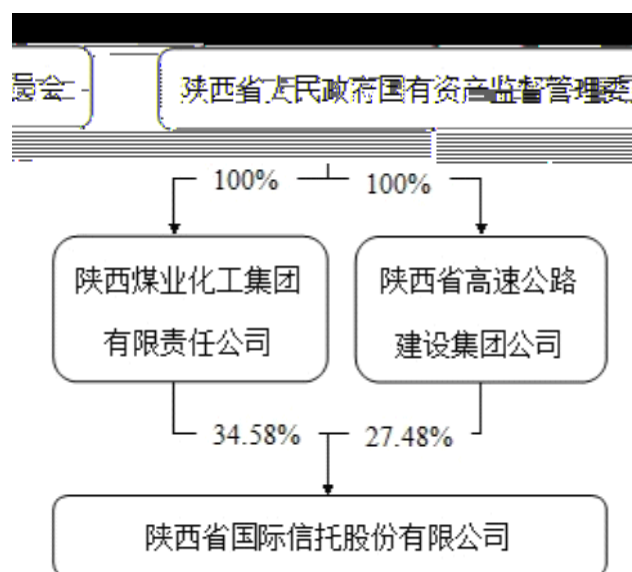
200,000,000

34.58%

	/				
		2004.6	71978336-8		

1.

2.



3.

**10%**

	/				
		2004 19	02 762568778	100	



				52	2013	01	31	2016	01	31	0	0	0	0
				49	2013	01	31	2016	01	31	0	0	0	0
				50	2013	01	31	2016	01	31	0	0	0	0
				57	2013	01	31	2016	01	31	0	0	0	0
				59	2013	01	31	2016	01	31	0	0	0	0
				55	2013	01	31	2016	01	31	0	0	0	0
				58	2013	01	31	2016	01	31	0	0	0	0
				54	2013	01	31	2016	01	31	0	0	0	0
				46	2013	01	31	2016	01	31	0	0	0	0
				40	2013	01	31	2016	01	31	0	0	0	0
				56	2013	01	31	2016	01	31	0	0	0	0
				42	2013	01	31	2016	01	31	0	0	0	0
				49	2013	01	31	2016	01	31	0	0	0	0
				58	2013	01	31	2016	01	31	0	0	0	0
				47	2013	01	31	2016	01	31	0	0	0	0
				41	2013	01	31	2016	01	31	0	0	0	0
				56	2009	07	27	2013	01	31	0	0	0	0
				49	2009	07	27	2013	01	31	0	0	0	0
				60	2009	07	27	2013	01	31	0	0	0	0
				47	2011	07	28	2013	01	31	0	0	0	0
				46	2009	07	27	2013	01	31	0	0	0	0
				50	2009	07	27	2013	01	31	0	0	0	0
				50	2009	07	27	2013	01	31	0	0	0	0
				50	2009	07	27	2013	01	31	0	0	0	0
				45	2009	07	27	2013	01	31	0	0	0	0
				52	2012	03	31	2013	01	31	12,000	0	0	12,000
				60	2009	07	27	2013	01	31	0	0	0	0
				47	2009	07	27	2013	01	31	0	0	0	0
	--	--	--	--	--	--	--	--	--	--	12,000	0	0	12,000

1964 1

1963 12

1956 12

1954 10

1986

1958 10

,

1955 4

1982 8

1959 6

1972 12

√ □

			2009 06		
			2006 03		
			2010 03		

√ □

			2011 03		
			2011 11		
			2000 10		
			2000 09		
			1982 08		

□ √

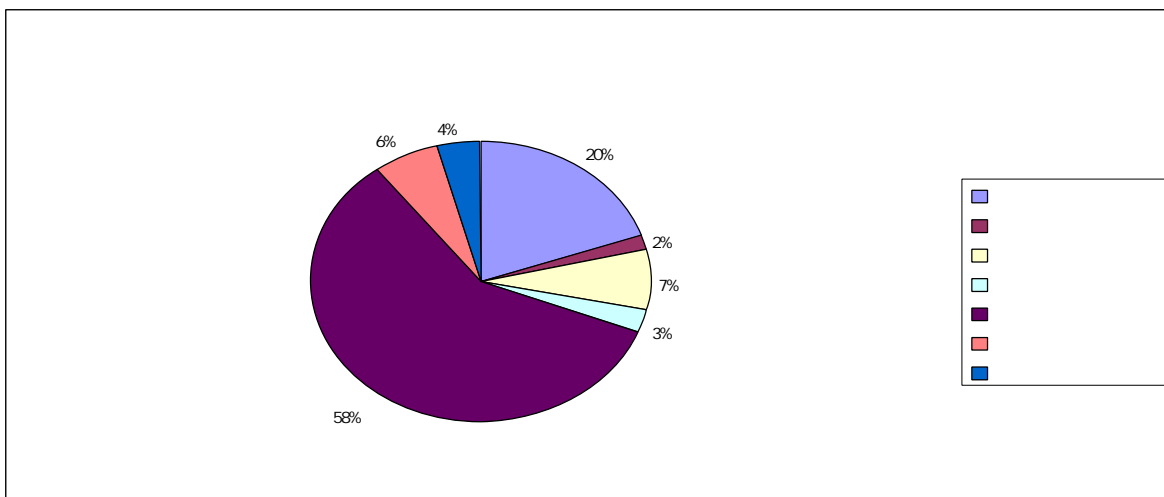
2012 12 31  
53

173

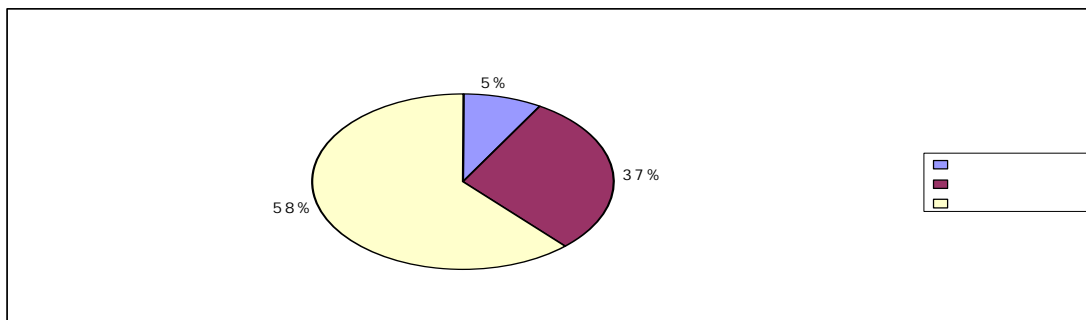
38.3

	34
	3
	12
	5
	101
	11
	7
	<b>173</b>
	9
	64
	100

1.



2



1.

2.

2012

3.

2012

21.23  
21.4

21.05

4.

5.

6.

7.

2012

8.

9.

2012

10

2012

1

2

" " " "

1

1 2013

"

"

2

3

4

2

1

2

3

1

2013

4

,

"

"

"

"

2

2012 3 31

1

2

3

2012

3

.

.

.

2

2012

.

2

" "

3

4

" "

" "

**2012**

2012

79

1	—— [2012-01]	1.11	www.cninfo.com.cn	
2	—— [2012-02]	1.12		
3	——2011 [2012-03]	1.17		
4	—— [2012-04]	3.15		
5	—— [2012-05]	3.16		
6	—— [2012-06]	3.20		
7	——	3.21		
	——			
	——			
	——			
	——			
8	—— [2012-07]	3.31		
	——			
9	—— [2012-08]	4.6		
10	——	4.24		
	——			
	——			
	——			
	——			
	——			
11	—— [2012-11]	4.25		
12	—— [2012-12]	4.27		
	—— [2012-13]			
	—— 2011 [2012-14]			
	——2011			
	——2011			
	——			
	——2011			

			2011	
	2012		[2012-15]	
	2011			
	2011	[2012-16]		
	2012			
	2012	[2012-17]		
	2011			
	2011			
13			[2012-18]	5.4
	2012			
14	2011		[2012-19]	5.15
15	2011		[2012-20]	5.19
	2011			
16			[2012-21]	5.26
17			[2012-22]	6.7
18			[2012-23]	6.9
	2012	1	[2012-24]	
19	2011		[2012-25]	6.19
20	2012	1	[2012-26]	6.26
	2012	1		
21				7.10
22	2012		[2012-27]	7.12
23				7.21
	[2012-28]			
24			[2012-29]	7.28
	2012	2	[2012-30]	
			[2012-31]	
25	2012	2		8.8
26	2012	2	[2012-32]	8.14
	2012	2		
27	2012			8.28
	2012	[2012-33]		
	2012			
			[2012-34]	
28		[2012-35]		9.14
29	2012		[2012-36]	10.10

30	—2012		10.29		
	—2012	[2012-37]			
31	—		10.30		
	[2012-38]				
32	—	[2012-39]	11.13		
33	—	[2012-40]	12.8		
	—				
34	—	[2012-41]	12.22		
	—	2013 1			
		[2012-42]			

2013 4 25